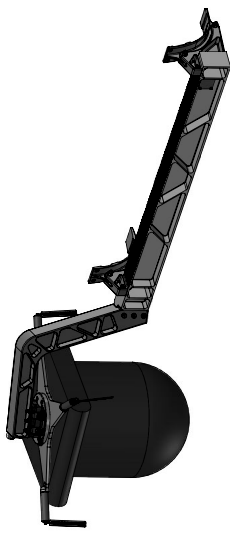


1 2 3 4 5 6 7 8

PARTS LIST									
ITEM	-1 QTY	-1A QTY	-2 QTY	-2A QTY	DESCRIPTION	MATERIAL	MATERIAL SPEC	FINISH	FINISH SPEC
1	1	1		-10	BEAM, SIDE, RH	6061-T6511 (AL ALLOY EXTD BAR)	QC-A-2008	ANODZE	MIL-A-8625 TYPE II CLASS 2
2			1	-11	BEAM, SIDE, LH	6061-T6511 (AL ALLOY EXTD BAR)	QC-A-2008	ANODZE	MIL-A-8625 TYPE II CLASS 2
3	1			-20	ARM, SUPPORT, RH (CF)	6061-T651 (AL ALLOY PLATE)	QC-A-25011	ANODZE	MIL-A-8625 TYPE II CLASS 2
4			1	-21	ARM, SUPPORT, LH (CF)	6061-T651 (AL ALLOY PLATE)	QC-A-25011	ANODZE	MIL-A-8625 TYPE II CLASS 2
5	2	2	2	-30	BRACKET, MOUNTING	6061-T6511 (AL ALLOY EXTD BAR)	QC-A-2008	ANODZE	MIL-A-8625 TYPE II CLASS 2
6					BLANK - FUTURE				
7	1	1		-40	PAD, FUSELAGE, FWD, RH	6061-T6511 (AL ALLOY EXTD BAR)	QC-A-2008	ANODZE	MIL-A-8625 TYPE II CLASS 2
8			1	-41	PAD, FUSELAGE, FWD, LH	6061-T6511 (AL ALLOY EXTD BAR)	QC-A-2008	ANODZE	MIL-A-8625 TYPE II CLASS 2
9	1	1		-50	PAD, FUSELAGE, AFT, RH	6061-T6511 (AL ALLOY EXTD BAR)	QC-A-2008	ANODZE	MIL-A-8625 TYPE II CLASS 2
10			1	-51	PAD, FUSELAGE, AFT, LH	6061-T6511 (AL ALLOY EXTD BAR)	QC-A-2008	ANODZE	MIL-A-8625 TYPE II CLASS 2
11	4	4	4	4	BEARING				
12	1	1		CF-101	CF RECV PLATE BOLT, HEX HEAD				
13	4	4	4	4	BOLT, HEX HEAD				
14	3	3	3	3	BOLT, HEX HEAD				
15	6	6	6	6	BOLT, HEX HEAD				
16	18	18	18	18	SCREW, SOCKET HEAD				
17	4	4	4	4	SCREW, FLAT HEAD				
18	19	19	19	19	NUT, SELF LOCKING				
19	38	38	38	38	WASHER, FLAT				
20	1	1	1	CF-112	HEX BOLT SPECIAL				
21	1	1	1	CF-120	WASHER, FLAT, TEFLON				
22	1	1	1	98025A038	WASHER, FLAT				
23	1			-22	ARM, SUPPORT, RH (DT)	6061-T651 (AL ALLOY PLATE)	QC-A-25011	ANODZE	MIL-A-8625 TYPE II CLASS 2
24			1	-23	ARM, SUPPORT, LH (DT)	6061-T651 (AL ALLOY PLATE)	QC-A-25011	ANODZE	MIL-A-8625 TYPE II CLASS 2
25	2	2	2	MS2120RF4-15	HELICAL WIRE INSERT, 1/4-28				
26	1	1	1	AFR-SM117M25-2	ID PLATE	SEE DWG			
27	4	4	4	AN960-10L	WASHER THIN				
28	4	4	4	NAS-1351-3-10P	MACHINE SCREW				
29	4	4	4	MS21042-3	STOP NUT				



**AFM-119NM-2A  
(REF TYP PAYLOAD)**

**NOTES:**

- AFM-119NM-2 AND 2A IS FOR LEFT SIDE APPLICATIONS SHOWN  
AFM-119NM-1 AND 1A IS RIGHT SIDE OPPOSITE
- IDENTIFY WITH PART NUMBER AFM-119NM APPROPRIATE DASH NUMBER AND  
MANUFACTURING IDENT NUMBER.
- Feature and hole locations are controlled by the electronic database.  
Database files are identified with the same name and revision as the drawing.  
Hole diameters are controlled on the face of the drawing

- VENDOR: M&M MASTER-CARR
- REFERENCE APPLICABLE CAD/CAM FILE FOR DIGITAL INSPECTION OF PART  
FEATURE GEOMETRY AND PART CONFORMITY.
- SHOWN NON ATTACHED TO CONNECTING EQUIPMENT FOR SIMPLICITY. SEE  
INSTALLATION MANUAL FOR IMPLEMENTATION.
- ALTERNATE MATERIAL: 6061-T651 (AL ALLOY CF BAR) PER QQ-A-225/8  
6061-T6 (AL ALLOY CF BAR) PER QQ-A-225/8
- ALTERNATE MATERIAL: 6061-T6511 (AL ALLOY EXTR BAR) PER QQ-A-200/8  
6061-T651 (AL ALLOY CF BAR) PER QQ-A-225/8  
6061-T6 (AL ALLOY CF BAR) PER QQ-A-225/8
- UPON INSTALLATION, SAFETY WIRE PER APPLICABLE INDUSTRIAL STANDARDS

NOTE: CONSULT WITH AGUSTA PRIOR TO REVISION CHANGES

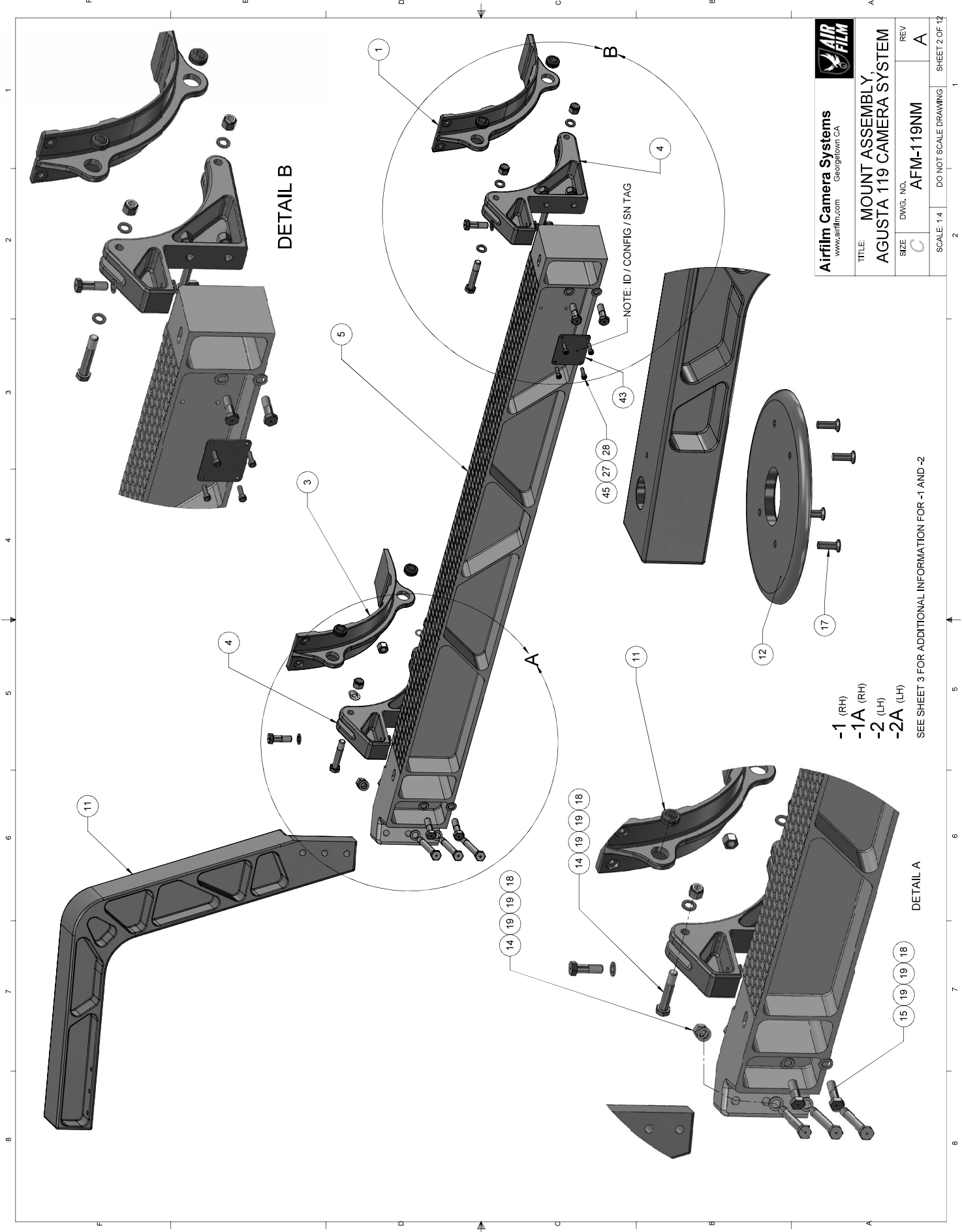
REVISIONS			
REV.	DESCRIPTION	DATE	APPROVED
A	INITIAL RELEASE	11/14/2013	S.M.

<b>DRAWING</b> NAME: _____ DATE: 10/1/2013 SPH: _____ DRAWN: _____ CHECKED: _____ APPROVED: _____		<b>Airfilm Camera Systems</b> www.airfilm.com Georgetown CA
TITLE: <b>MOUNT ASSEMBLY, AGUSTA 119 CAMERA SYSTEM</b>		SIZE: <b>C</b> DWG. NO.: <b>AFM-119NM</b>
SCALE: 1:4 DO NOT SCALE DRAWING		SHEET 1 OF 12

UNLESS OTHERWISE NOTED ALL DIMENSIONS ARE IN INCHES

TOLERANCES:  
 X ± .1  
 XX ± .03  
 XXX ± .01  
 ANGULAR ± .5°  
 BREAK ALL SHARP EDGES

**PROPRIETARY NOTICE**  
 THIS DRAWING AND ALL INFORMATION CONTAINED HEREIN IS THE PROPERTY OF AIRFILM CAMERA SYSTEMS. IT IS TO BE USED ONLY FOR THE PROJECT AND NOT BE COPIED OR DIVULGED IN WHOLE OR IN PART AS THE BASIS FOR MANUFACTURING OR SALE OF THE ITEM OR ITEMS DISCLOSED.



**Airfilm Camera Systems**  
www.airfilm.com  
Georgetown CA

**AIR FILM**

TITLE:	MOUNT ASSEMBLY, AGUSTA 119 CAMERA SYSTEM		
SIZE:	C	DWG. NO.:	AFM-119NM
REV	A		

SCALE: 1:4      DO NOT SCALE DRAWING      SHEET 2 OF 12

- 1 (RH)
- 1A (RH)
- 2 (LH)
- 2A (LH)

SEE SHEET 3 FOR ADDITIONAL INFORMATION FOR -1 AND -2

DETAIL B



DETAIL A



TYPICAL SENSOR INSTALLATION

NOTE: ID TAG EXAMPLE

- AIRFILM CAMERA SYSTEMS INC
- MOUNT ASSY NO. AFM-119NM-2A CTRL: 9811
- PAYLOAD ASSY NO. AFM-A119SW-1 CTRL: 9816
- MADE IN USA
- L/H
- INCLUDE TOP ASSY INFORMATION
- INCLUDE SUB ASSY INFORMATION
- INCLUDE SIDE INFORMATION

 <p><b>Airfilm Camera Systems</b> www.airfilm.com Georgetown CA</p>			
<p>TITLE: MOUNT ASSEMBLY AGUSTA 119 CAMERA SYSTEM</p>			
SIZE	DWG. NO.	REV	
C	AFM-119NM	-A	
SCALE: 1:4		DO NOT SCALE DRAWING	
2		1	
SHEET 3 OF 12			