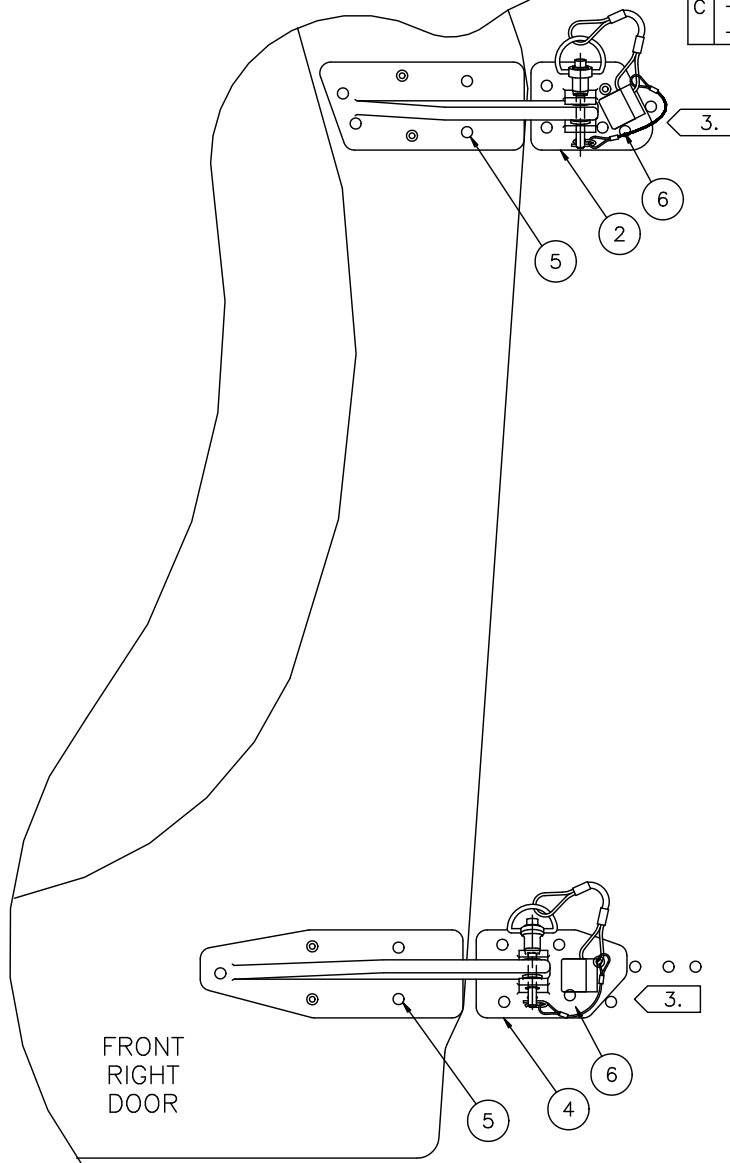
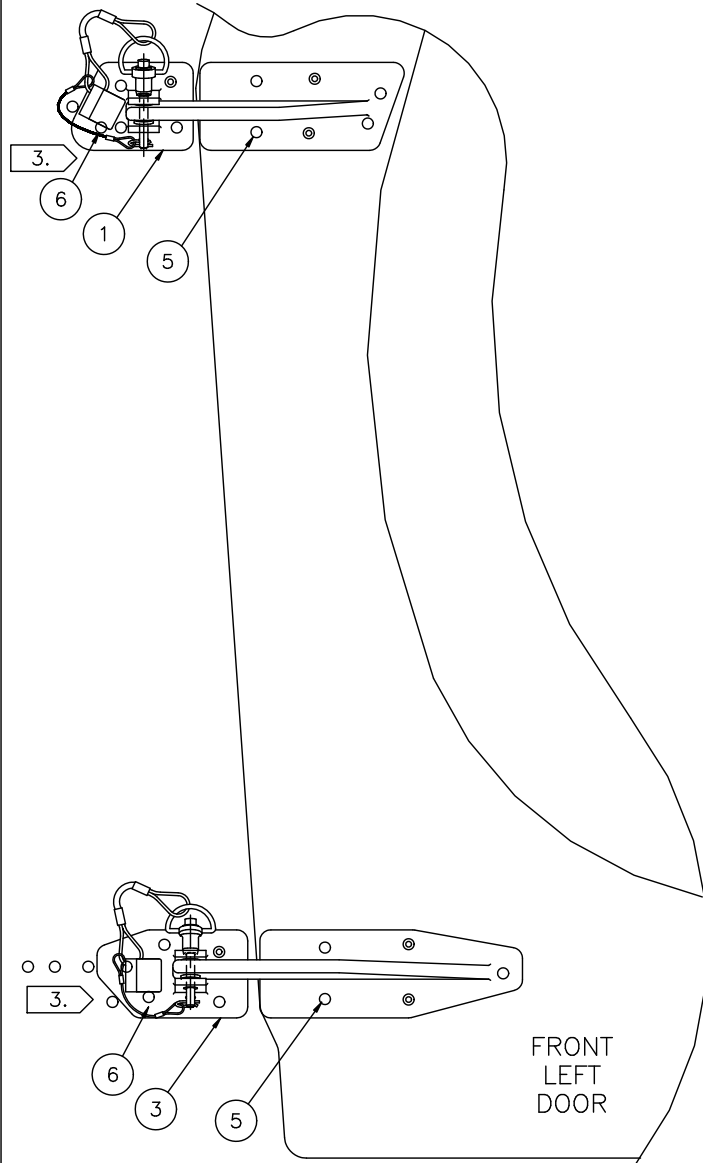


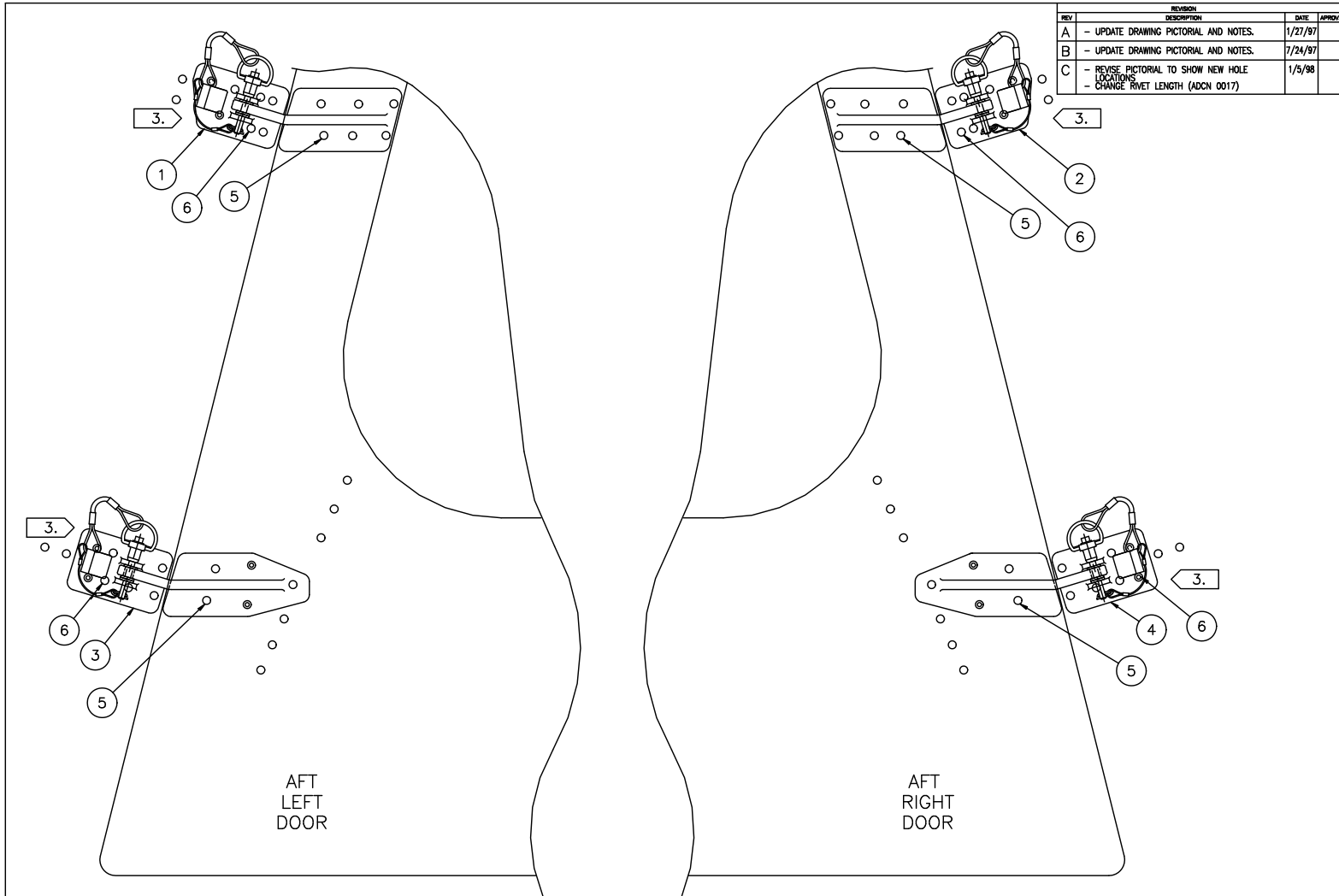
REVISION			
REV	DESCRIPTION	DATE	APPROV.
A	- UPDATE DRAWING PICTORIAL AND NOTES.	1/27/97	
B	- UPDATE DRAWING PICTORIAL AND NOTES.	7/24/97	
C	- REVISE PICTORIAL TO SHOW NEW HOLE LOCATION - CHANGE RIVET LENGTH (ADCN 0016)	1/5/98	



NOTES: 1. RIVETS AS SHOWN ARE FOR PICTORIAL PURPOSES ONLY. AND DO NOT REFLECT ACTUAL HOLE LOCATION  
 2. TRIM BASE PLATES TO FIT IF NECESSARY.  
 3. RIVETS THAT MAY FALL UNDER THE BUMPER BLOCK NEED TO BE CHANGED TO COUNTERSUNK CR3212-5-4.

QTY	ITEM	PART NUMBER	MANUFACTURER	DESCRIPTION
AR 6	CR3213-5-5 or CR3212-5-5	Bench Stock		RIVETS
AR 5	CR3243-5-3	Bench Stock		RIVETS
1	4	9602200-4	CTECH	RIGHT FRONT BOTTOM HINGE ASSEMBLY
1	3	9602200-3	CTECH	LEFT FRONT BOTTOM HINGE ASSEMBLY
1	2	9602200-2	CTECH	RIGHT FRONT TOP HINGE ASSEMBLY
1	1	9602200-1	CTECH	LEFT FRONT TOP HINGE ASSEMBLY

DRAWN	D. I.	DATE	12/31/96	Certified Technology, Inc. 13512 98th Avenue Northeast Kirkland, Washington 98034	
CHECK		DATE			
APPROVAL		DATE			
BREAK ALL EDGES <input checked="" type="checkbox"/> UNLESS OTHERWISE SPECIFIED DIMENSIONS ARE IN INCHES DIMENSIONAL TOLERANCES				TITLE	FRONT DOOR HINGE INSTALLATION
3 DECIMALS ±.010 2 DECIMALS ±.030 1 DECIMAL ±.050 ANGULAR ± 1°				DWG NO.	9602100
				PRO NO.	9602
				SIZE	E
				SCALE	1/1
				REV	C
				SHEET	1 OF 1

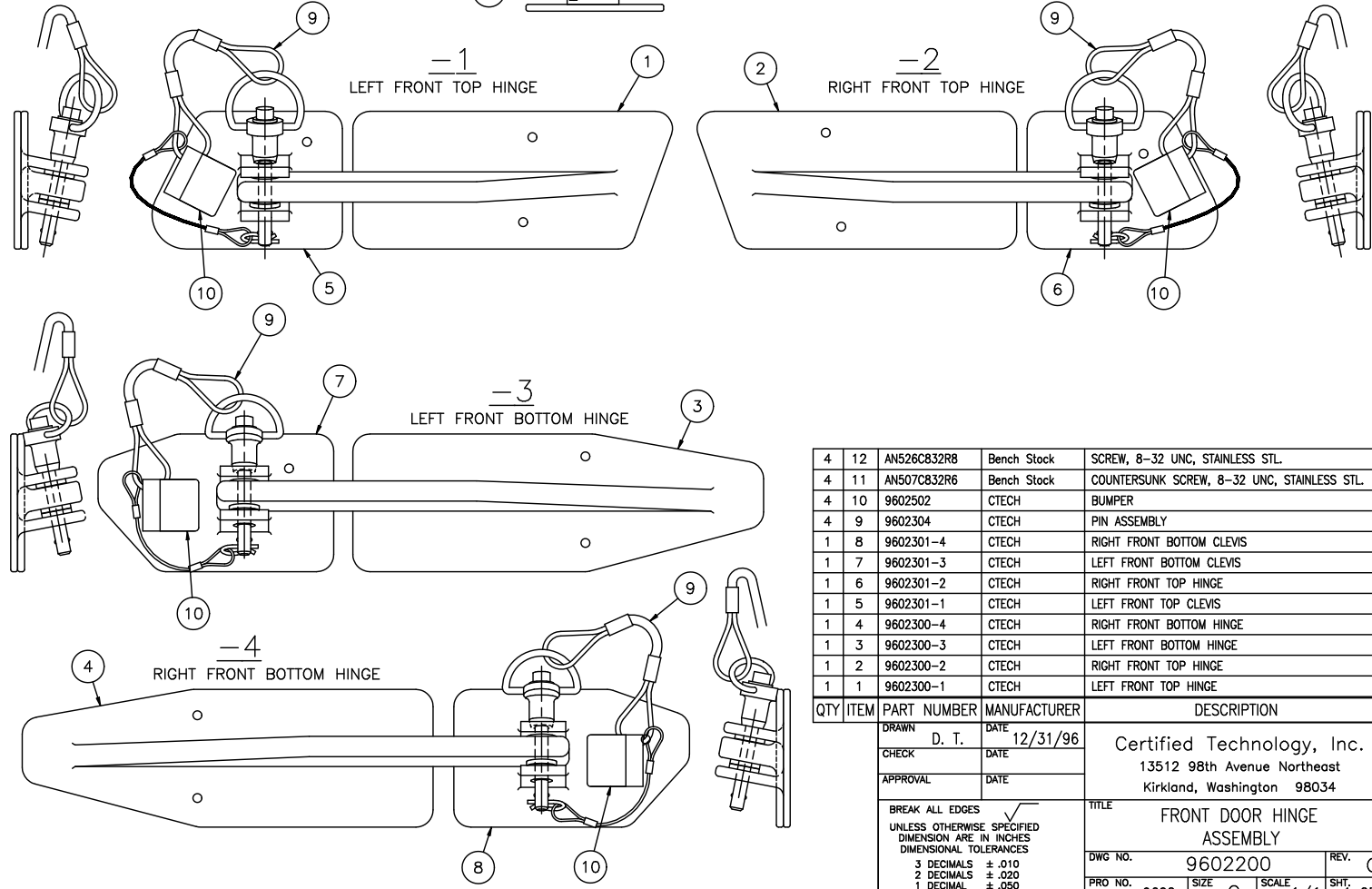
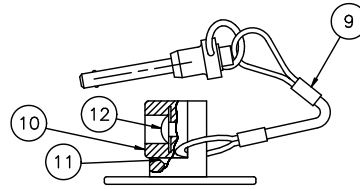


NOTES: 1. RIVETS AS SHOWN ARE FOR PICTORIAL PURPOSES ONLY. AND DO NOT REFLECT ACTUAL HOLE LOCATION  
 2. TRIM BASE PLATES TO FIT IF NECESSARY.  
 3. RIVETS THAT MAY FALL UNDER THE BUMPER BLOCK NEED TO BE CHANGED TO COUNTERSUNK CR3212-5-4.

QTY	ITEM	PART NUMBER	MANUFACTURER	DESCRIPTION
6		CR3213-3-3 or CR3212-5-3	Bench Block	RIVETS
1	4	9602201-4	CTECH	RIGHT REAR BOTTOM HINGE ASSEMBLY
1	3	9602201-3	CTECH	LEFT REAR BOTTOM HINGE ASSEMBLY
1	2	9602201-2	CTECH	RIGHT REAR TOP HINGE ASSEMBLY
1	1	9602201-1	CTECH	LEFT REAR TOP HINGE ASSEMBLY

DRAWN	D. T.	DATE	12/31/96	Certified Technology, Inc. 13512 98th Avenue Northwest Kirkland, Washington 98034
CHECK		DATE		
APPROVAL		DATE		
UNLESS OTHERWISE SPECIFIED DIMENSIONS ARE IN INCHES DIMENSIONAL TOLERANCES				TITLE
3 DECIMALS ±.010 2 DECIMALS ±.020 1 DECIMAL ±.050 ANGULAR ± 1°				REAR DOOR HINGE INSTALLATION DWG NO. 9602101 PRO NO. 9602
				SHEET E TOTAL 1/1 OF 1

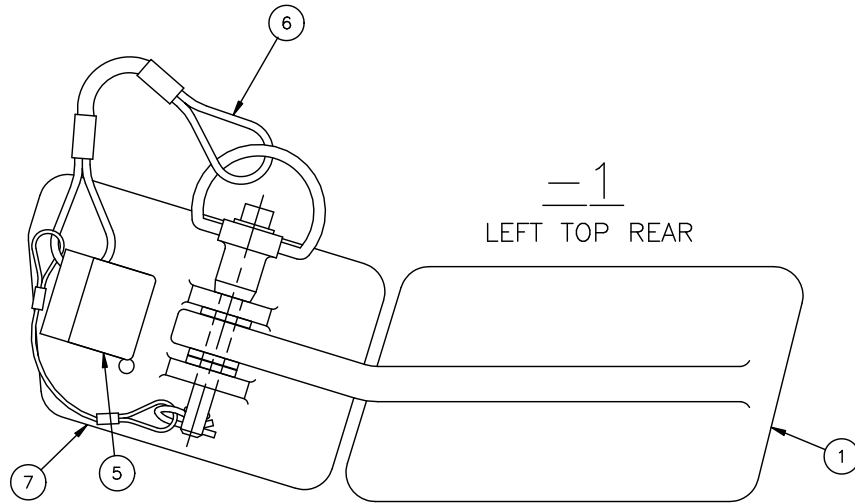
SIDE VIEW  
TYPICAL BUMPER  
AND MOUNTING BLOCK  
INSTALLATION



REV	REVISION DESCRIPTION	DATE	APPROV.
A	- UPDATE DRAWING PICTORIAL.	1/27/97	
B	- ADD ITEM #12. - CHANGE ITEM #11 6-32 TO 8-32 & SCREW STYLE. - UPDATE DRAWING PICTORIAL.	7/24/97	
C	- REVISE PICTORIAL TO SHOW NEW HOLE LOCATIONS	1/5/98	

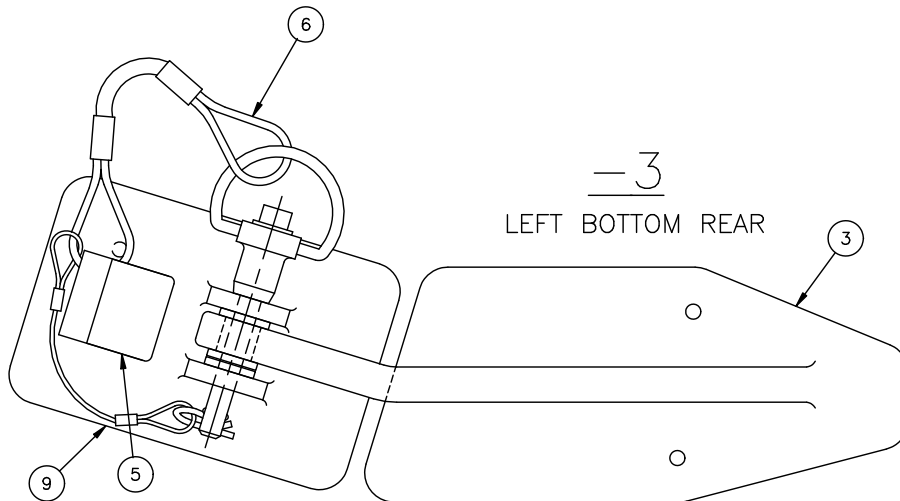
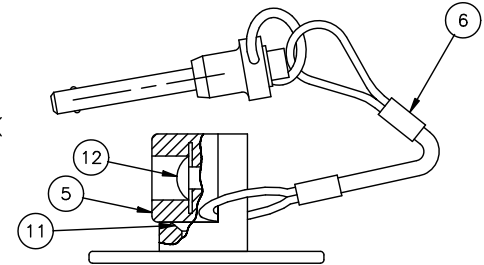
QTY	ITEM	PART NUMBER	MANUFACTURER	DESCRIPTION
4	12	AN526C832R8	Bench Stock	SCREW, 8-32 UNC, STAINLESS STL.
4	11	AN507C832R6	Bench Stock	COUNTERSUNK SCREW, 8-32 UNC, STAINLESS STL.
4	10	9602502	CTECH	BUMPER
4	9	9602304	CTECH	PIN ASSEMBLY
1	8	9602301-4	CTECH	RIGHT FRONT BOTTOM CLEVIS
1	7	9602301-3	CTECH	LEFT FRONT BOTTOM CLEVIS
1	6	9602301-2	CTECH	RIGHT FRONT TOP HINGE
1	5	9602301-1	CTECH	LEFT FRONT TOP CLEVIS
1	4	9602300-4	CTECH	RIGHT FRONT BOTTOM HINGE
1	3	9602300-3	CTECH	LEFT FRONT BOTTOM HINGE
1	2	9602300-2	CTECH	RIGHT FRONT TOP HINGE
1	1	9602300-1	CTECH	LEFT FRONT TOP HINGE

DRAWN		DATE		Certified Technology, Inc. 13512 98th Avenue Northeast Kirkland, Washington 98034	
D. T.		12/31/96			
CHECK		DATE			
APPROVAL		DATE		TITLE	
FRONT DOOR HINGE ASSEMBLY				DWG NO.	
BREAK ALL EDGES UNLESS OTHERWISE SPECIFIED DIMENSION ARE IN INCHES DIMENSIONAL TOLERANCES				9602200	REV. C
3 DECIMALS ± .010 2 DECIMALS ± .020 1 DECIMAL ± .050 ANGULAR ± 0.5°				PRO NO. 9602	SIZE C SCALE 1/1 SHT. 1 OF 1



-1  
LEFT TOP REAR

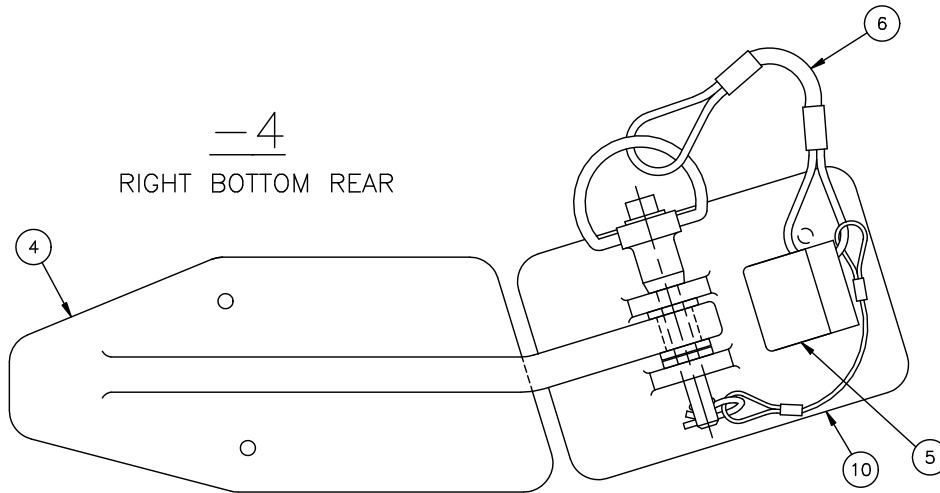
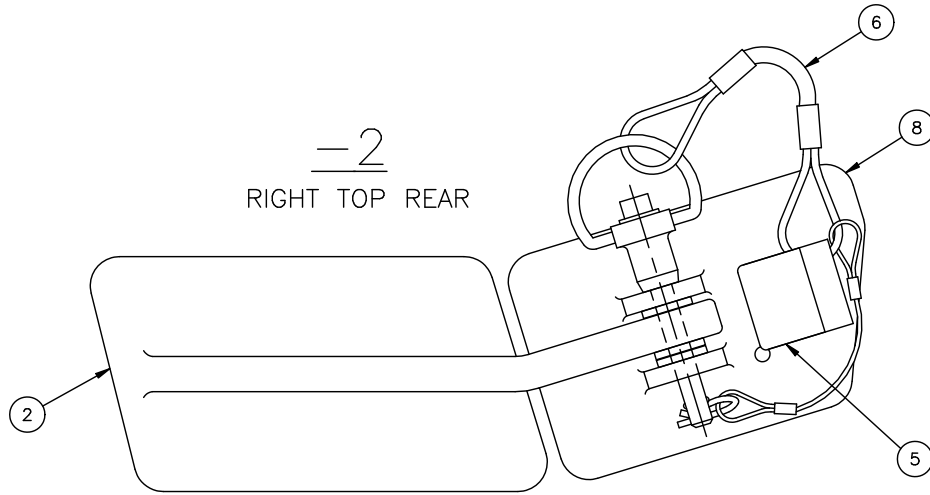
SIDE VIEW  
TYPICAL BUMPER  
AND MOUNTING BLOCK  
INSTALLATION



-3  
LEFT BOTTOM REAR

REVISION			
REV	DESCRIPTION	DATE	APPROV.
A	- UPDATE DRAWING PICTORIAL.	1/27/97	
B	- UPDATE DRAWING PICTORIAL. - ADD ITEM #12. - CHANGE STYLE OF SCREW IN ITEM #11.	7/24/97	
C	- REVISE PICTORIAL TO SHOW NEW HOLE POSITIONS AND BASE PROFILES	1/5/98	

4	12	AN526C832R8	Bench Stock	SCREW, 8-32 UNC, STAINLESS STL.
4	11	AN507C832R6	Bench Stock	COUNTERSUNK SCREW, 8-32 UNC, STAINLESS STL.
1	10	9602303-4	CTECH	RIGHT BOTTOM REAR CLEVIS
1	9	9602303-3	CTECH	LEFT BOTTOM REAR CLEVIS
1	8	9602303-2	CTECH	RIGHT TOP REAR CLEVIS
1	7	9602303-1	CTECH	LEFT TOP REAR CLEVIS
4	6	9602304	CTECH	PIN ASSEMBLY
4	5	9602502	CTECH	BUMPER
1	4	9602302-4	CTECH	RIGHT BOTTOM REAR HINGE
1	3	9602302-3	CTECH	LEFT BOTTOM REAR HINGE
1	2	9602302-2	CTECH	RIGHT TOP REAR HINGE
1	1	9602302-1	CTECH	LEFT TOP REAR HINGE
QTY	ITEM	PART NUMBER	MANUFACTURER	DESCRIPTION
	DRAWN	D. T.	DATE	Certified Technology, Inc. 13512 98th Avenue Northeast Kirkland, Washington 98034
	CHECK		DATE	
	APPROVAL		DATE	
BREAK ALL EDGES UNLESS OTHERWISE SPECIFIED DIMENSION ARE IN INCHES DIMENSIONAL TOLERANCES				TITLE
3 DECIMALS ± .010 2 DECIMALS ± .020 1 DECIMAL ± .050 ANGULAR ± 0.5°				REAR DOOR HINGE ASSEMBLY
DWG NO.		9602201		REV. C
PRO NO.	9602	SIZE	B	SCALE 1/1
				SHT. 1 OF 2



REVISION			
REV	DESCRIPTION	DATE	APPROV.
	- SEE SHEET #1.		

DRAWN	D. T.	DATE	12/31/96	Certified Technology, Inc. 13512 98th Avenue Northeast Kirkland, Washington 98034	
CHECK		DATE			
APPROVAL		DATE			
BREAK ALL EDGES UNLESS OTHERWISE SPECIFIED DIMENSION ARE IN INCHES DIMENSIONAL TOLERANCES				TITLE	
3 DECIMALS ± .010 2 DECIMALS ± .020 1 DECIMAL ± .050 ANGULAR ± 0.5°				REAR DOOR HINGE ASSEMBLY	
DWG NO.			9602201	REV. C	
PRO NO.	9602	SIZE	B	SCALE	1/1
				SHT.	2 OF 2