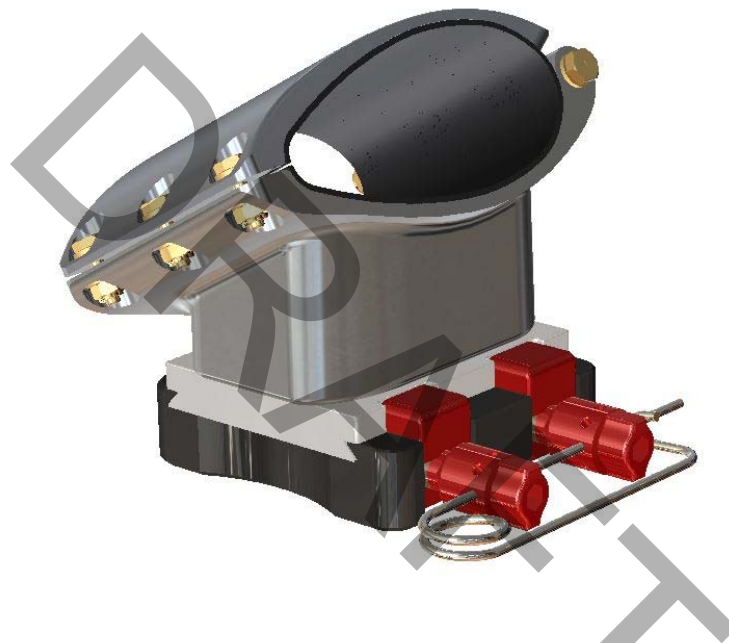


# ***AirFilm Camera Systems***

REPORT AFWM-1-006

INSTALLATION INSTRUCTIONS  
CESSNA WING STRUT UTILITY MOUNT



DATE ISSUED: TBD

Airfilm Camera Systems  
6245 Aerodrome Way, Hangar No. 2  
PO Box 1352  
Georgetown, Ca 95634

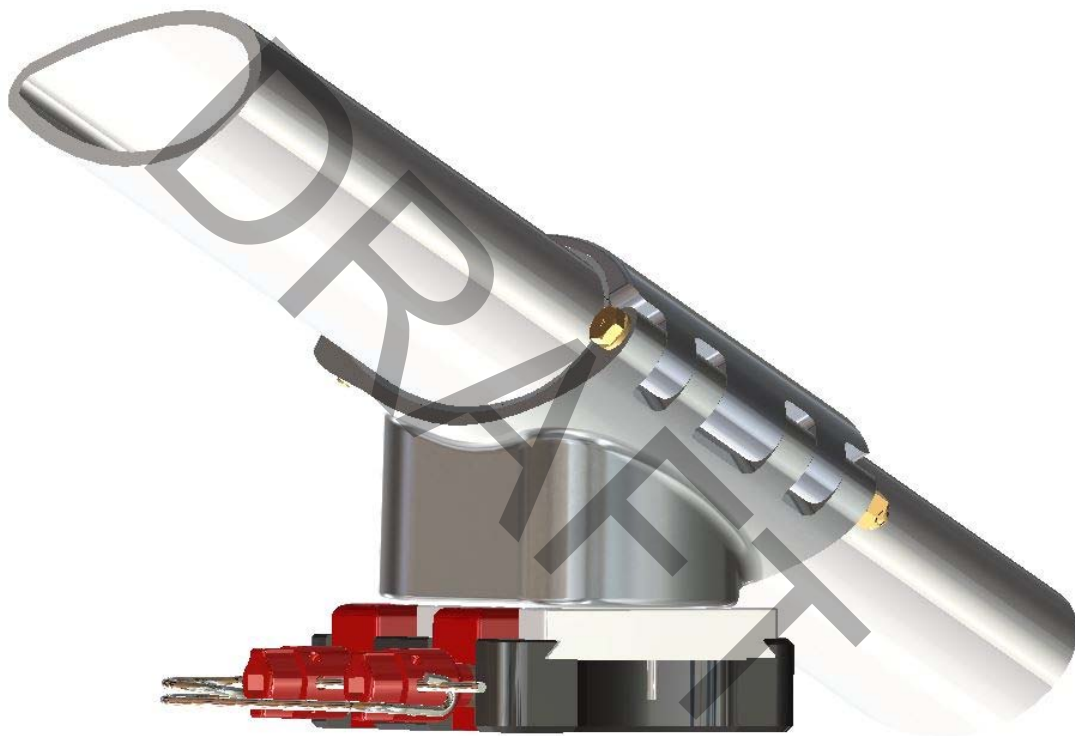
## LOG OF REVISIONS

REVISION	DATE	PAGES EFFECTED	COMMENTS
N/C	TBD	ALL	Original submittal

**INTRODUCTION AND DESCRIPTION:**

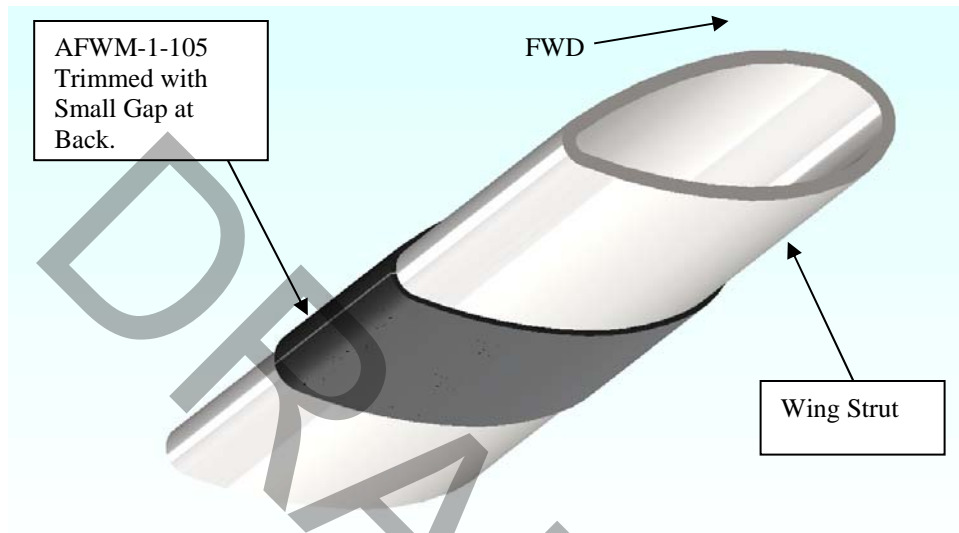
The Airfilm Camera Systems Wing Strut Utility Mount (AFWM-1) fastens to the strut near the upper wing attach point of the Cessna Aircraft to provide a means for attaching external payload up to 50 lbs. Typical payloads could include but are not limited to: cameras, sensors, and lights. The AFWM-1 mount is fabricated from 6061-T6 aluminum, and attaches to the aircraft wing strut with AN3 bolts and AN365 locknuts.

This part was determined to not be a critical part based on its use and location outside the cabin, away from any personal and critical systems.

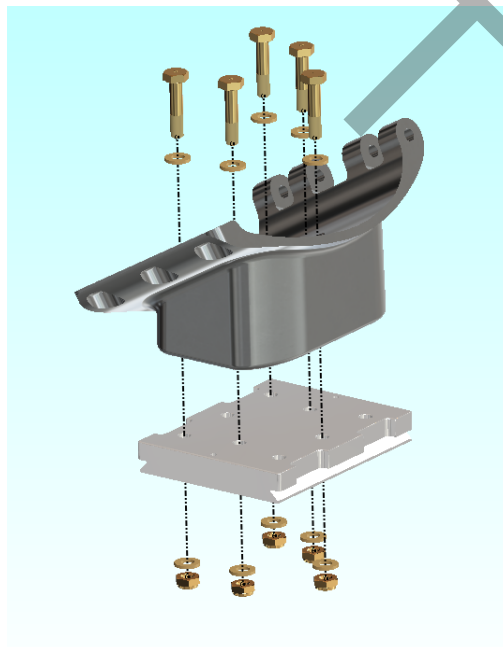


### R44 NOSE MOUNT BRACKET

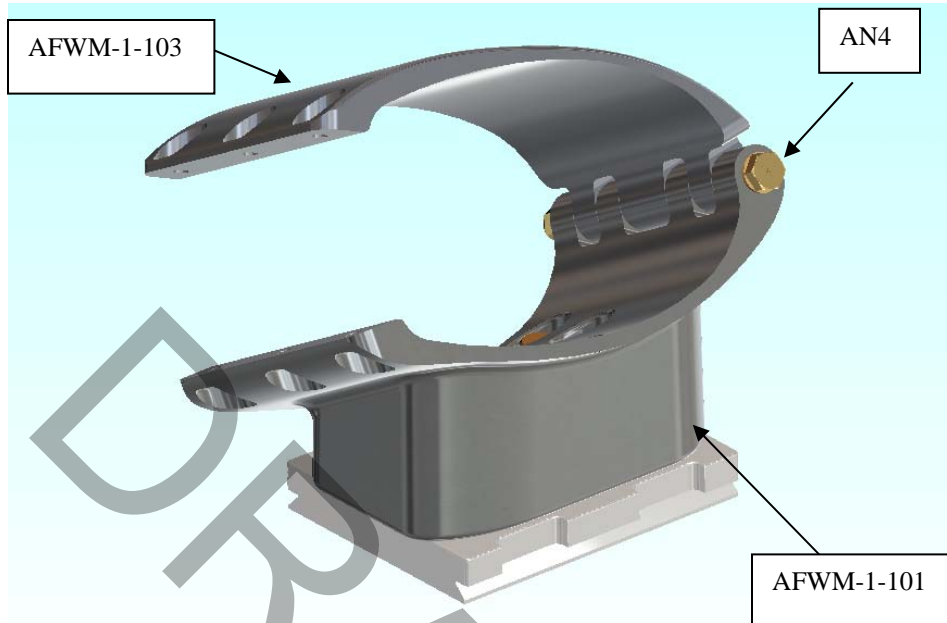
1. Clean an area at about 25% of the length of the strut from the wing with rubbing alcohol.
2. Wrap AFWM-1-105 Interface Pad around wing strut and trim so there is no overlap of the rubber.



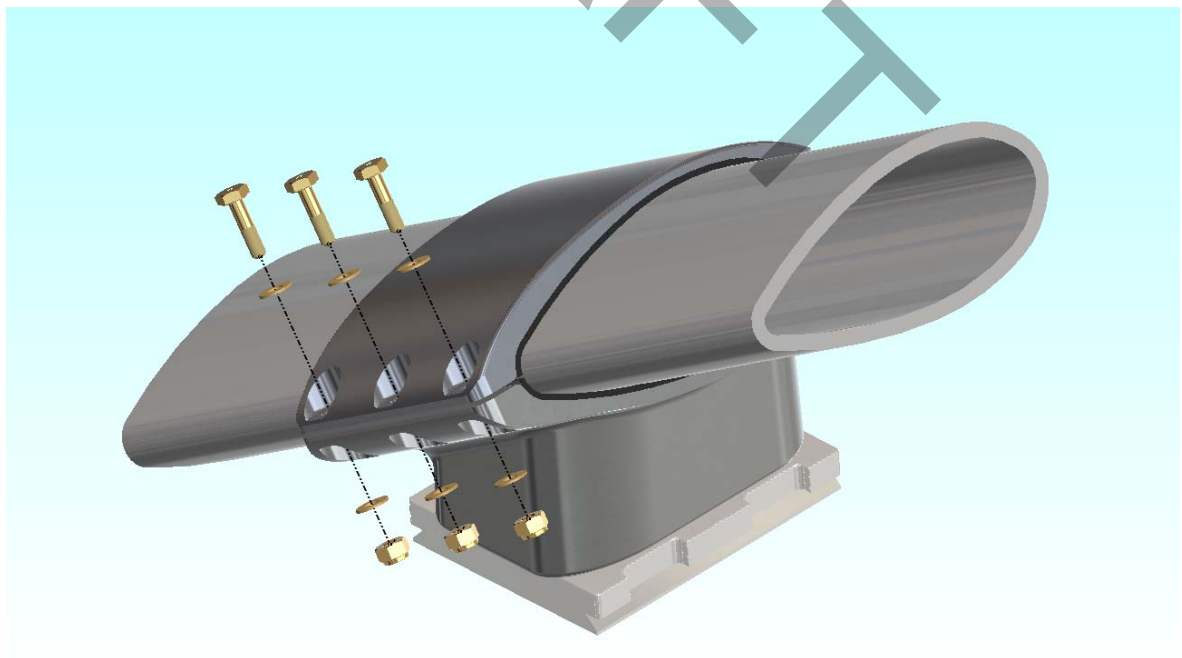
3. Attach the upper portion of the DT-1 to AFWM-1-101 Lower Clamp with AN4 hex bolts, AN364 nuts, and AN960 washers.



4. Pass AN4 Hex Bolt (with AN960 under the head of the bolt) through fronts of AFWM-1-101 Lower Clamp and AFWM-1-103 Upper Clamp and lightly tighten (do not fully tighten yet as it will bind the hinge).



5. Slide Assembly over the Interface Pad already on wing strut and insert and tighten the 3 AN3 hex bolts, AN960 washers, and AN365 nuts towards the rear of the clamp.



6. Properly torque the forward AN4 and rear AN3 bolts.

7. Revise weight and balance per the following table:

The following table presents the location of the weight/center of gravity of the mount and payload sensor/camera for adjustment of the aircraft weight and center of gravity with the mount installed. (Values below are for C172)

DESCRIPTION	WEIGHT (lbs)	STATION (in)	BL (in)
PAYLOAD	Use Actual Wt <b>MAX 50 pounds.</b>	32	85.87

10. Make appropriate log book entry for installation.
11. Return to service.
12. Removing Cessna Wing Strut Mount system:
- a. Follow instructions in reverse order to remove.
  - b. Remove entire Cessna Wing Strut Mount Assembly and associated hardware.