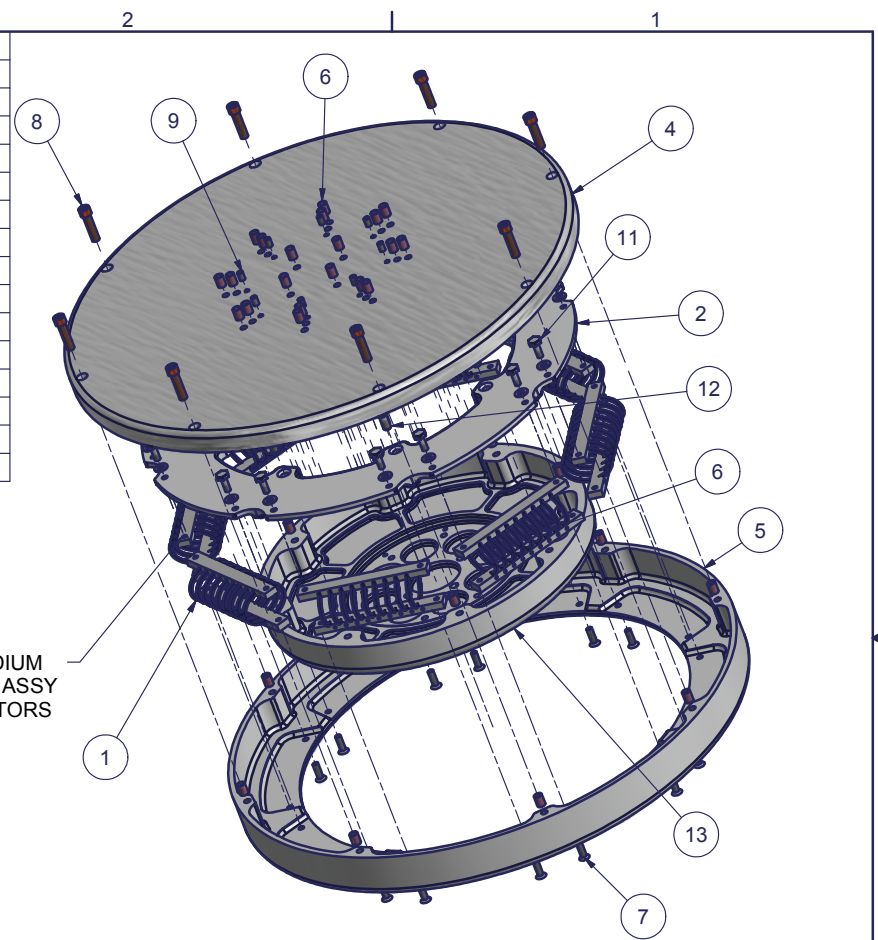
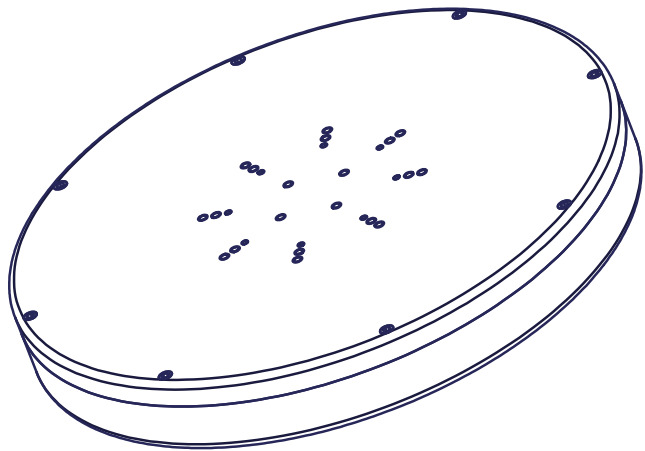


Parts List			
ITEM	QTY	PART NUMBER	DESCRIPTION
1	8	WR3-700-10-D (ENIDINE) OR M3-140-10A (IDC)	WIRE ROPE ISOLATOR
1	1	WR3-600-10D (ENIDINE) OR M3-130-10A (IDC)	WIRE ROPE ISOLATOR (ALT)
1	1	WR3-400-10D (ENIDINE) OR M3-110-10A (IDC)	WIRE ROPE ISOLATOR (ALT)
1	1	WR3-800-10-D (ENIDINE) OR M3-150-10A (IDC)	WIRE ROPE ISOLATOR (ALT)
2	1	V1725-20	TOP HOLD DOWN
4	1	V1725-22	TOP PLATE
5	1	V1725-23	LOWER PLATE
6	A/R	MS21209-FY-F16	HELI-COIL 1/4 X 28 X .375 LOCKING
7	16	AN3-4A	HEX BOLT
8	8	MS16998-45	SCREW
9	A/R	MS21209-F1-20	HELI-COIL 10X32 X .280 LOCKING
10	16	AN960-10L	WASHER THIN
11	16	AN3-4A	HEX BOLT
12	8	MS24694-S100	MACHINE SCREW



NOTE: APPLY THREAD LOCK MEDIUM (LOCTITE #220) OR EQVL DURING ASSY ALL THREADED HOLES ON ISOLATORS



REVISION HISTORY		
REV	DESCRIPTION	DATE
A	REVISED HARDWARE	9/10/2007
B	ADDED VIEW	1/1/2009
C	4 ADD ALT WIRE	9/1/2012

<small>UNLESS OTHERWISE NOTED ALL DIMENSIONS ARE INCH TOLERANCES</small> <small>DECIMALS .X +/- 0.1 .XX +/- 0.03 .XXX +/- 0.005</small> <small>ANGULAR +/- 0.5 DEG</small> <small>BREAK ALL SHARP EDGES</small>	ASSY DRAWING		AirFilm Camera Systems Georgetown, Ca 530-333-0193 www.airfilm.com		
	DRAWN <i>S.P. Herring</i> 12/21/2004		TITLE VIBRATION 17.25 REDUCER		
	CHECKED		SIZE B	DWG NO V1725-1	REV C
	APPROVED Scott Herring		SCALE		
<small>THIS DRAWING AND SPECIFICATION IS THE PROPERTY OF AIRFILM CAMERA SYSTEMS AND SHALL NOT BE COPIED OR DIVULGED IN WHOLE OR IN PART AS THE BASIS FOR MANUFACTURING OR SALE OF THE ITEM OR ITEMS DISCLOSED.</small>					
			SHEET 1 OF 3		

4

3

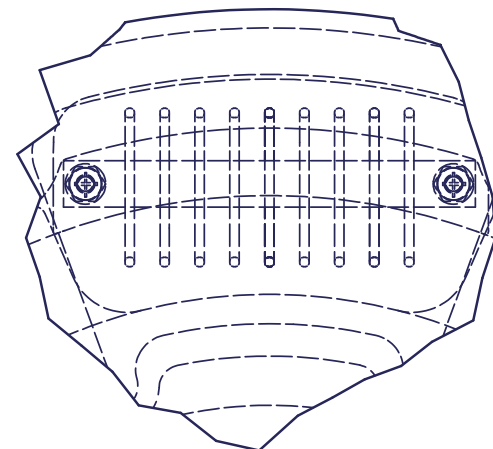
2

1

A

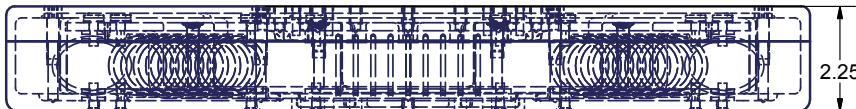
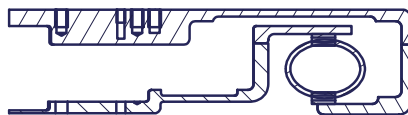
Ø17.25

A



DETAIL A

SECTION A-A



2.25

UNLESS OTHERWISE NOTED ALL DIMENSIONS ARE INCH TOLERANCES DECIMALS .X +/- 0.1 .XX +/- 0.03 .XXX +/- 0.005 ANGULAR +/- 0.5 DEG BREAK ALL SHARP EDGES	ASSY DRAWING		AirFilm Camera Systems	
	DRAWN <i>S.P. Herring</i> 12/21/2004		Georgetown, Ca 530-333-0193 www.airfilm.com	
	CHECKED		TITLE VIBRATION 17.25 REDUCER	
	APPROVED Scott Herring		SIZE B	DWG NO V1725-1
<small>THIS DRAWING AND SPECIFICATION IS THE PROPERTY OF AIRFILM CAMERA SYSTEMS, AND SHALL NOT BE COPIED OR DIVULGED IN WHOLE OR IN PART AS THE BASIS FOR MANUFACTURING OR SALE OF THE ITEM OR ITEMS DISCLOSED.</small>		SCALE	SHEET 2 OF 3	

4

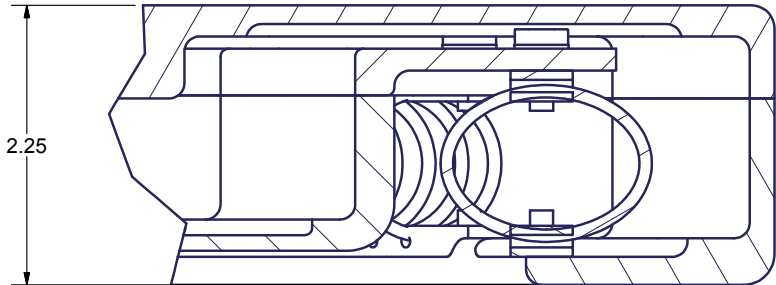
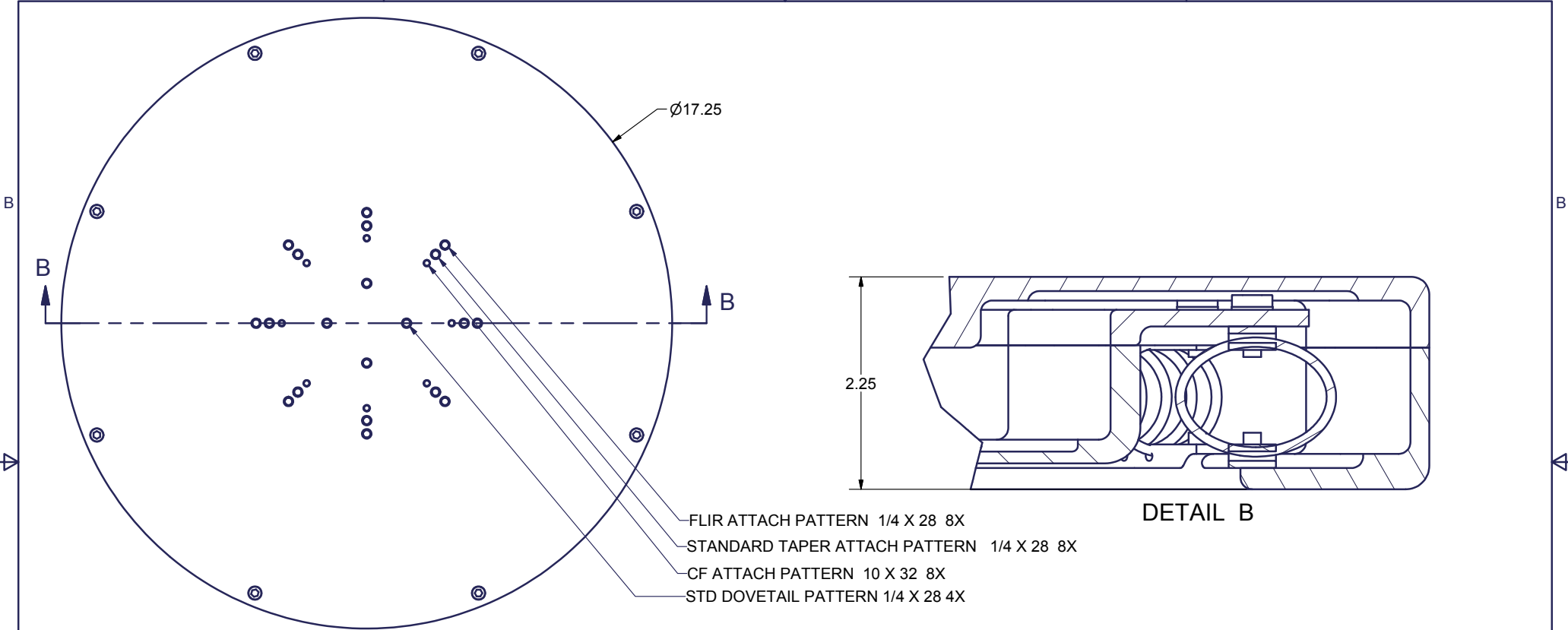
3

2

1

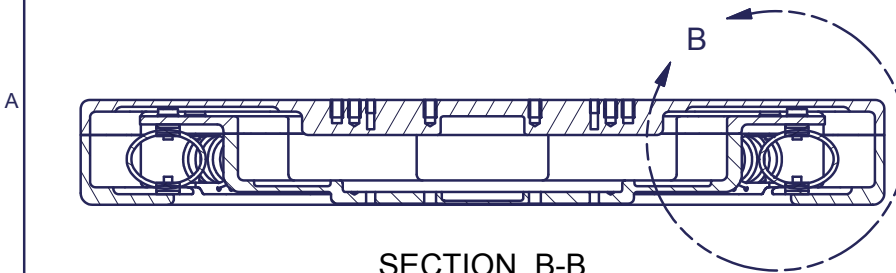


4 | 3 | 2 | 1



DETAIL B

- FLIR ATTACH PATTERN 1/4 X 28 8X
- STANDARD TAPER ATTACH PATTERN 1/4 X 28 8X
- CF ATTACH PATTERN 10 X 32 8X
- STD DOVETAIL PATTERN 1/4 X 28 4X



SECTION B-B

<p>UNLESS OTHERWISE NOTED ALL DIMENSIONS ARE INCH TOLERANCES</p> <p>DECIMALS .X +/- 0.1 .XX +/- 0.03 .XXX +/- 0.005</p> <p>ANGULAR +/- 0.5 DEG</p> <p>BREAK ALL SHARP EDGES</p>	ASSY DRAWING		AirFilm Camera Systems Georgetown, Ca 530-333-0193 www.airfilm.com	
	DRAWN <i>S.P. Herring</i> 12/21/2004		VIBRATION 17.25 REDUCER	
	CHECKED			
	APPROVED Scott Herring		SIZE B	DWG NO V1725-1
THIS DRAWING AND SPECIFICATION IS THE PROPERTY OF AIRFILM CAMERA SYSTEMS, AND SHALL NOT BE COPIED OR DIVULGED IN WHOLE OR IN PART AS THE BASIS FOR MANUFACTURING OR SALE OF THE ITEM OR ITEMS DISCLOSED.		SCALE	SHEET 3 OF 3	

4 | 3 | 2 | 1